

DECORE-ATIVE SPECIALTIES®

Digital Door Catalog Installation



 **HEXAGON**
CABINET VISION

RTA CABINETS

DRAWER FRONTS DRAWER BOXES MOLDINGS

ACCESSORIES

FINISHING

HARDWARE

HOW TO INSTALL

Digital Door Catalog

■ CONTENTS

Download	2
Backup CABINET VISION	3
Installation	4
UnInstall	6
Locating in Catalog Editor	7
Contact Information	9

■ DOWNLOAD

a. Visit Decore.com and click on “Download Now”

The screenshot shows the Decore-ative Specialties website. The header includes navigation links: Home, Downloads, Log Off, and an Anytime logo. A search bar is also present. The main content area is titled "CABINET VISION support" and contains text explaining that the Decore-ative Specialties' door catalog can be loaded into versions 11 or 12 of CABINET VISION. It also provides contact information for Sarah Nicholls at snicholls@decore.com and a link to an instruction document. Below this, there is a section for "CABINET VISION Catalogs" with links to download catalogs for Decore Wood, DecoForm, and both. A final section for "CABINET VISION 12" mentions direct support by Hexagon and provides a link to <http://esupport.verosoftware.com>.

b. Visit <http://esupport.verosoftware.com/> to download

The screenshot shows the Hexagon eSupport website. The header features the Hexagon logo, a search bar, and a user profile icon. The main banner has the title "Strength in Numbers" and the text "A true community is greater than the sum of its parts. When users help each other, everyone wins." Below the banner, there are four sections: "Existing Users" with a "Click here to sign in" button, "Not on Support?" with a "Contact your local reseller" button, "Monitored User Forums" with a description of the forum's purpose, and "Free Downloads" with a description of the download service.

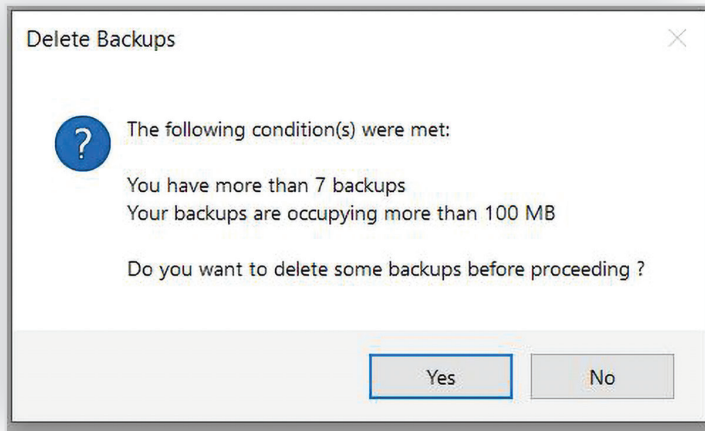
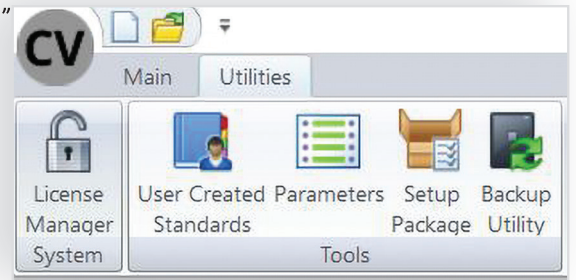
c. File Download

BACKUP

CABINET VISION

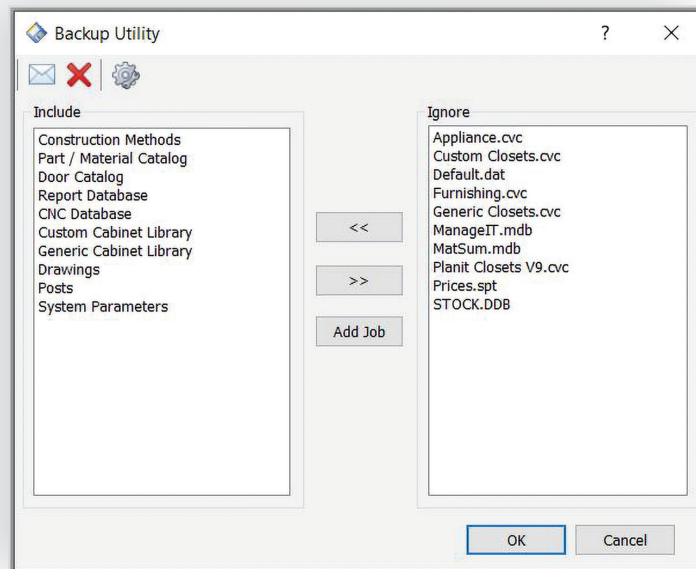
a. Open CABINET VISION, Click “Utilities” and Click “Backup Utility”

Backup is recommended during installation of the Digital Door Catalog.

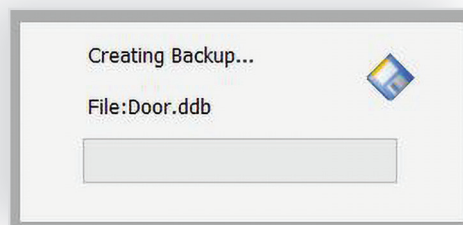
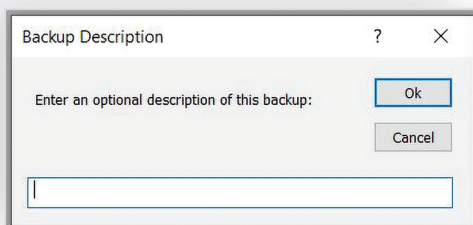


b. CABINET VISION recommends deleting old backups Click “yes or no” to remove or keep the backups.

c. Use the arrows to add items to the “Include” section that you want added in the backup. Click “ok”

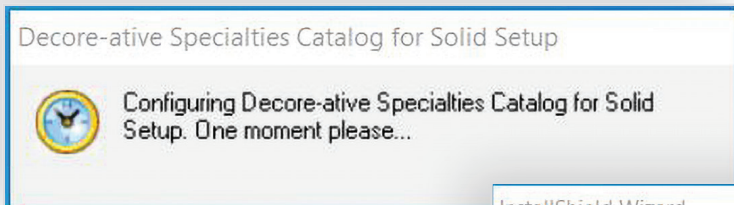
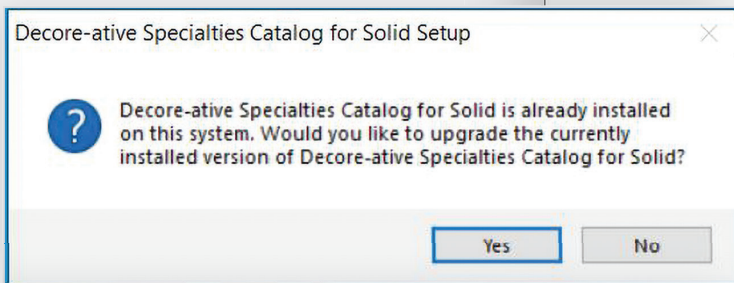
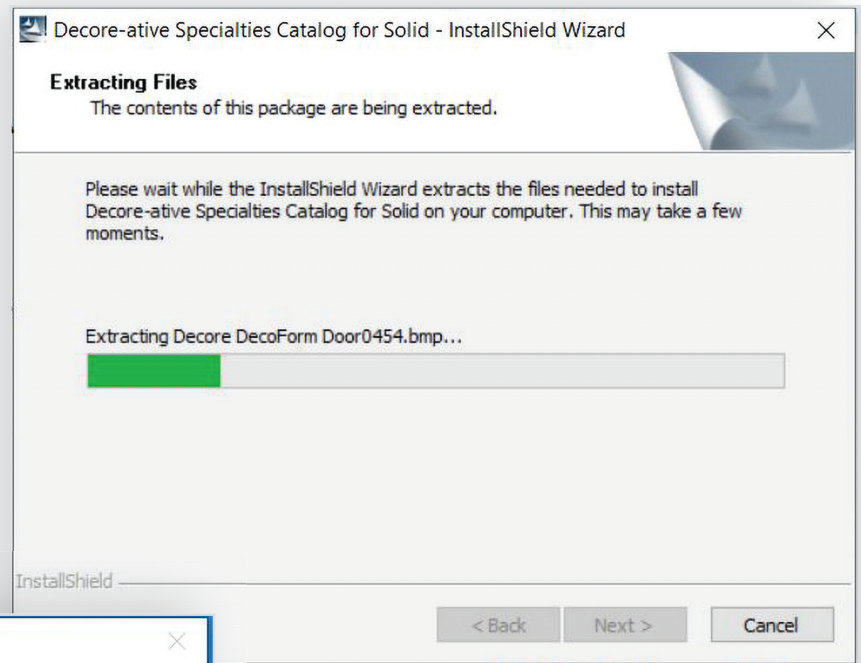


d. Enter a description in the box and click “ok” for the backup to begin.



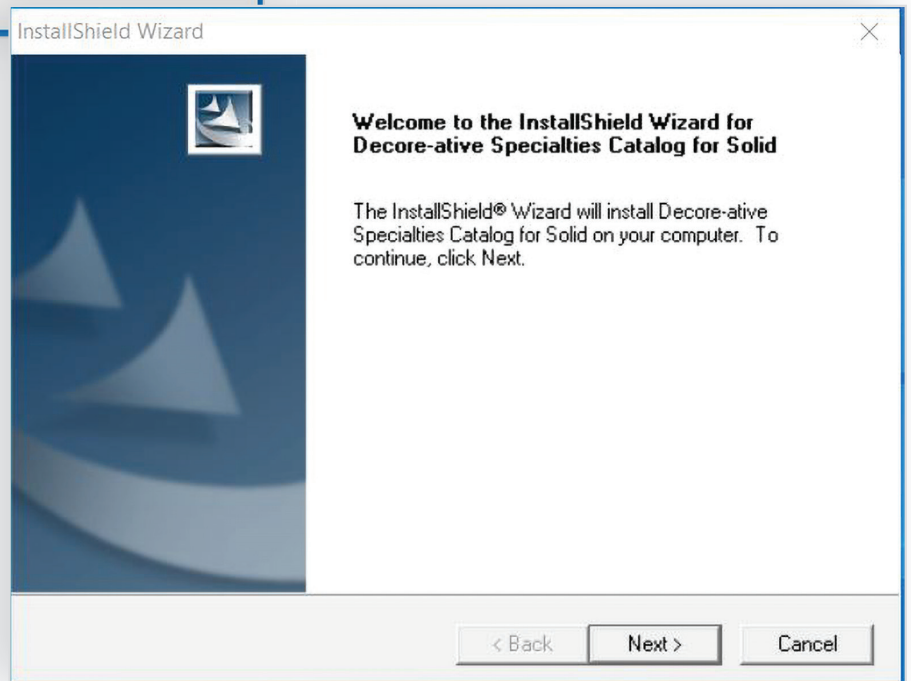
■ INSTALLATION

a. Double Click the .exe file in the Downloads Folder. It will ask, "Do you want to allow this app to make changes to your device?" Click "Yes." File extraction will begin.



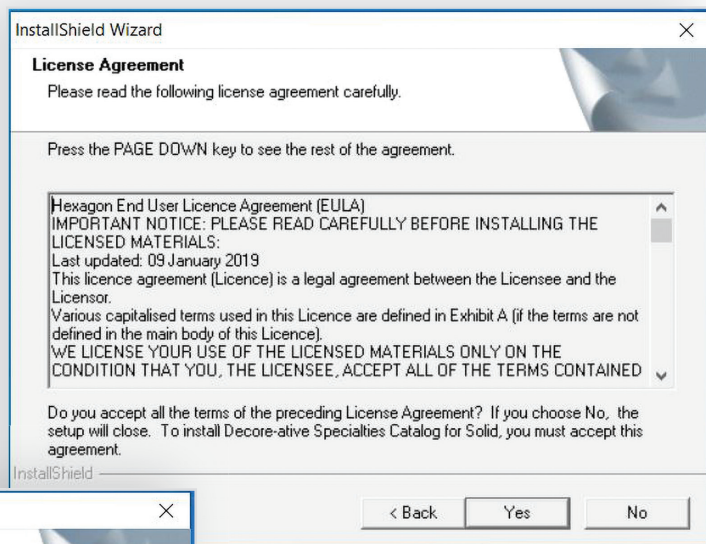
b. If catalog previously installed, you will receive the prompt below. Click "Yes" to install the latest version. If installing the catalog for the first time, proceed to step "c" below. This process will override previous digital door catalogs from Decore-active Specialties.

c. Click "Next"

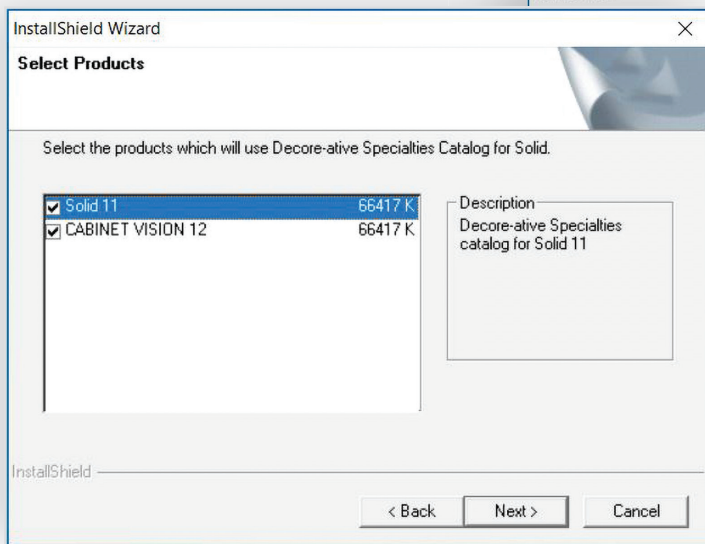


■ INSTALLATION

d. Click “Yes” Catalog Setup Agreement

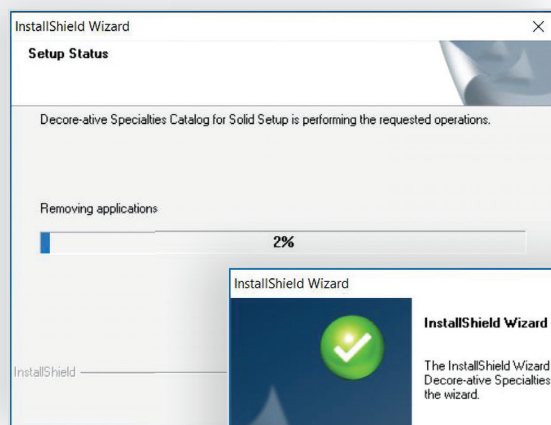


e. Select preferred Version of CABINET VISION to install. Catalog will work in either Version 11 or 12. Click “Next”

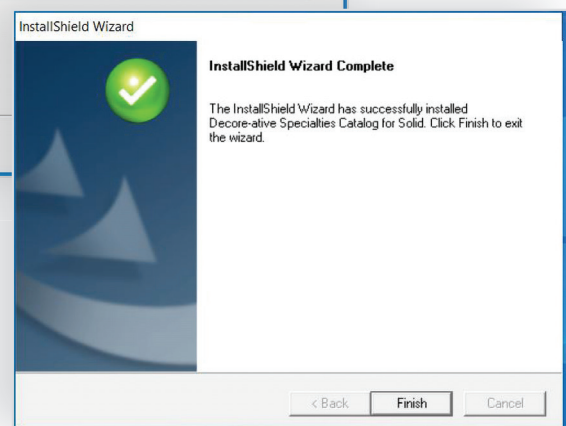


f. Setup Status Update:

Wizard is removing the previous version and installing the new digital door catalog. This step may not occur in the process depending if you previously had the catalog installed.

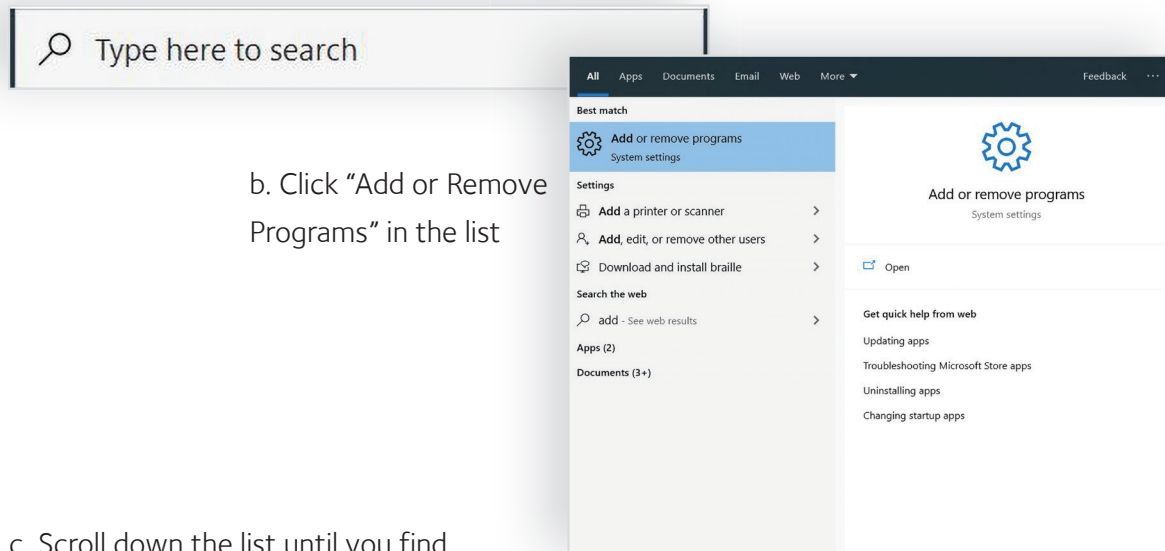


g. Catalog Installation Complete! Click “Finish” to end the application.



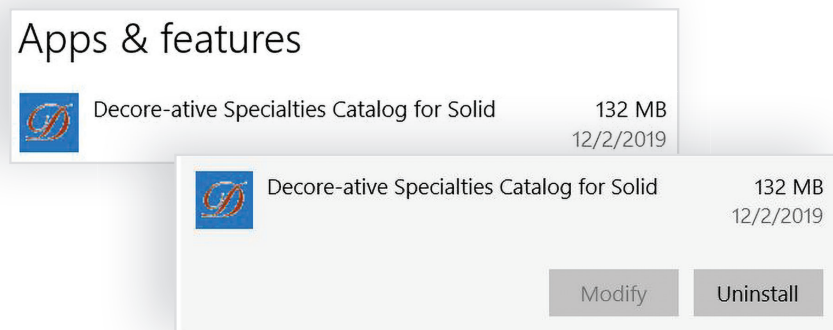
■ UNINSTALL

a. To remove the catalog, type in the Search box on your computer “Add or Remove Programs”



b. Click “Add or Remove Programs” in the list

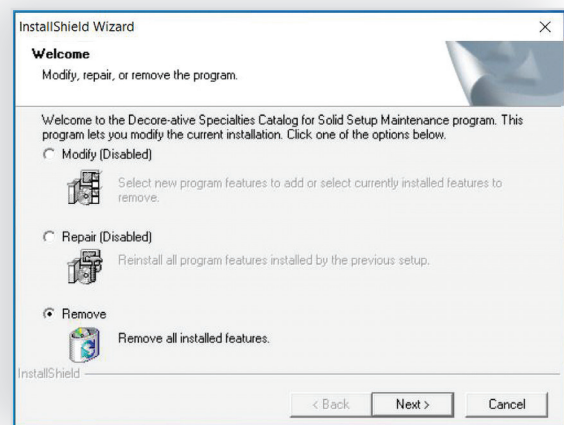
c. Scroll down the list until you find Decore-ative Specialties Catalog for Solid



d. Click on “Decore-ative Specialties Catalog for Solid”, then “Uninstall”, and then click “Uninstall” to confirm.

e. Prompt screen will ask, “Do you want to allow this app from an unknown publisher to make changes to your device?” Click “Yes”

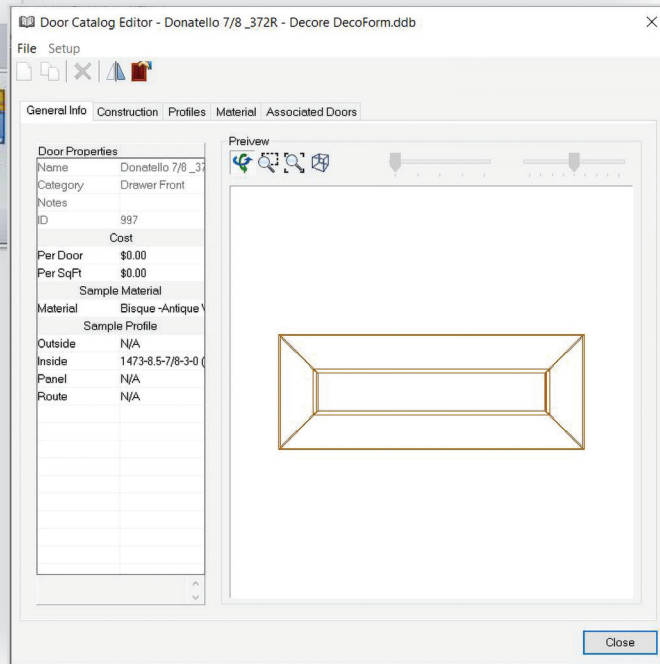
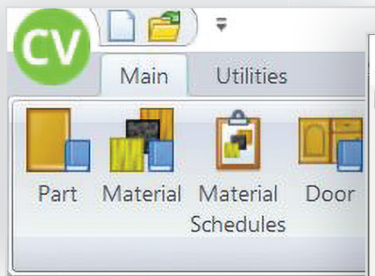
f. Select “Remove” and click “Next” to remove the catalog.



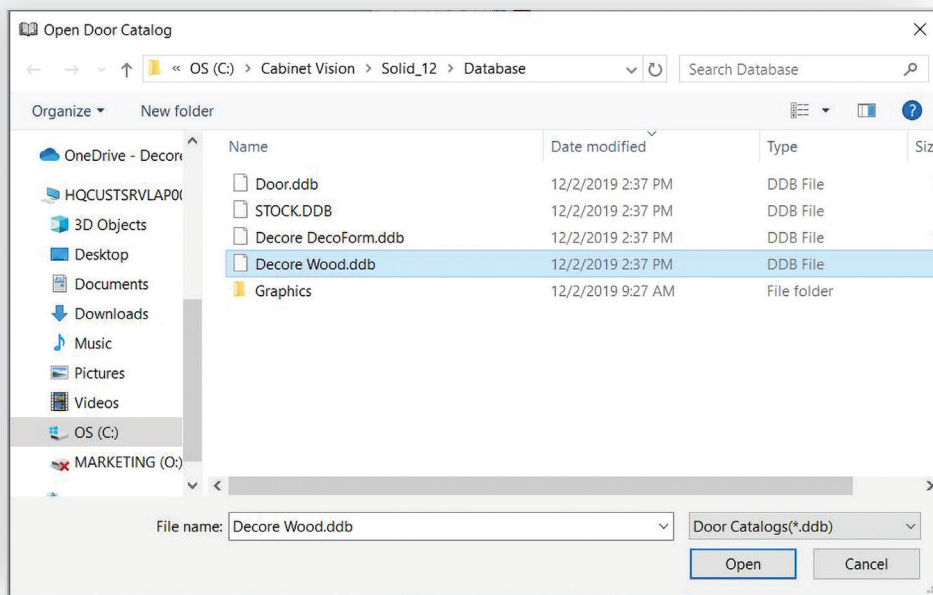
LOCATING

in Catalog Editor

a. Open CABINET VISION and click on the door icon.



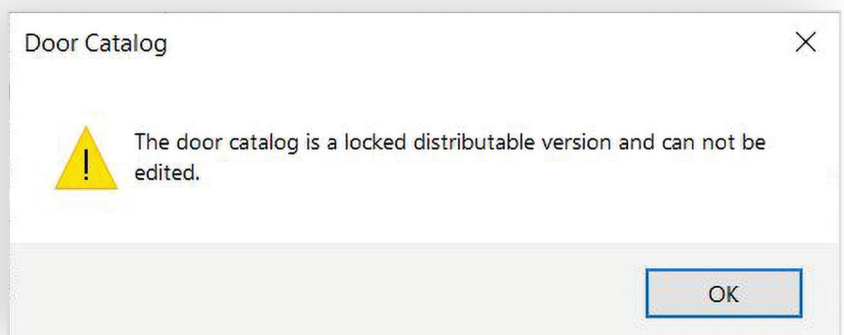
b. Click "File", then "Open Door Catalog"



c. Prompt screen below will appear. Insure you are viewing the Database folder for Solid 11 or Solid 12.

Select the catalog you desire. Click "Open"

d. Prompt will appear notifying you the catalog is locked and cannot be edited. Click "OK"





3800 Palisades Drive

Tuscaloosa, Alabama 35405

866.675.6551

CONTACT

Sarah Nicholls

snicholls@decore.com

LOCATIONS

Elk Grove, CA

Irwindale, CA

Monroe, NC

CORPORATE

2772 South Peck Road

Monrovia, CA 91016

626.254.9191



DECORE.COM